

MONTHLY MEMBERSHIP PROGRESS REPORT

LOCATION MONTANA

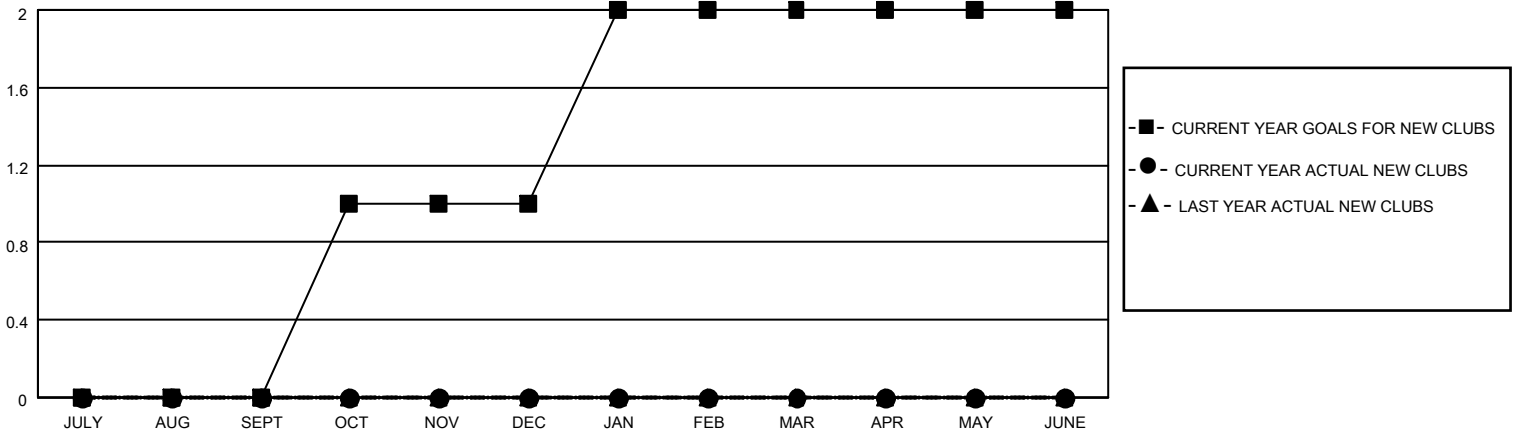
District 37

Results as of: 4/30/2022

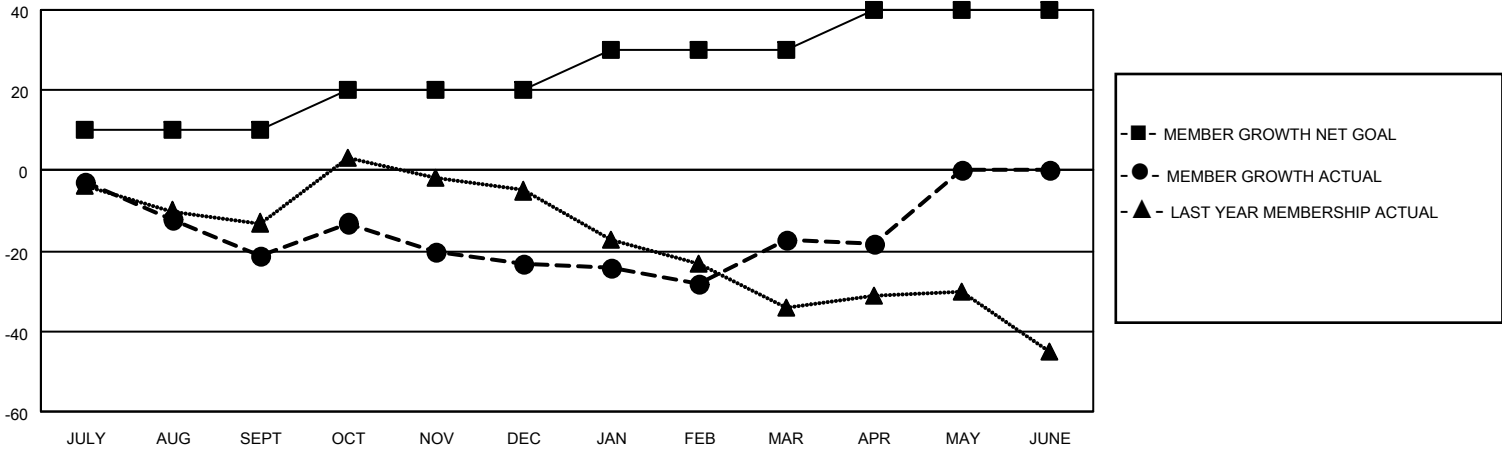
Clubs			
RESULTS FOR 2021-2022			
QUARTER	NEW CLUB GOAL	NEW CLUBS	DROPPED CLUBS
JULY/AUG/SEPT	0	0	1
OCT/NOV/DEC	1	0	1
JAN/FEB/MAR	1	0	0
APR/MAY/JUNE	0	0	0

Members			
RESULTS FOR 2021-2022			
QUARTER	MEMBER GROWTH NET GOAL	MEMBER GROWTH ACTUAL	DROPPED MEMBERS ACTUAL (including transfers)
JULY/AUG/SEPT	10	28	42
OCT/NOV/DEC	10	52	51
JAN/FEB/MAR	10	29	20
APR/MAY/JUNE	10	10	11

GOALS AND ACTUAL NEW CLUBS CUMULATIVE



GOALS AND ACTUAL MEMBERS CUMULATIVE



DROPPED CLUBS: 2

38 CLUBS OF 66 ADDED 1 OR MORE NEW MEMBERS

GENDER DISTRIBUTION

MALE	1,102 (69.13%)
FEMALE	492 (30.87%)
NON BINARY	0 (0.00%)
PREFER NOT TO ANSWER	0 (0.00%)

DROPPED MEMBERS

[CLICK HERE FOR CUMULATIVE MEMBERSHIP DATA](#)

DECEASED	18
CLUB CANCELLED	3
OTHER	103
TOTAL	124

TOTAL FAMILY UNIT MEMBERS 318

FAMILY MEMBERS PAYING HALF DUES 160